

FLOOR DRAINS AND ACCESSORIES

200 Series

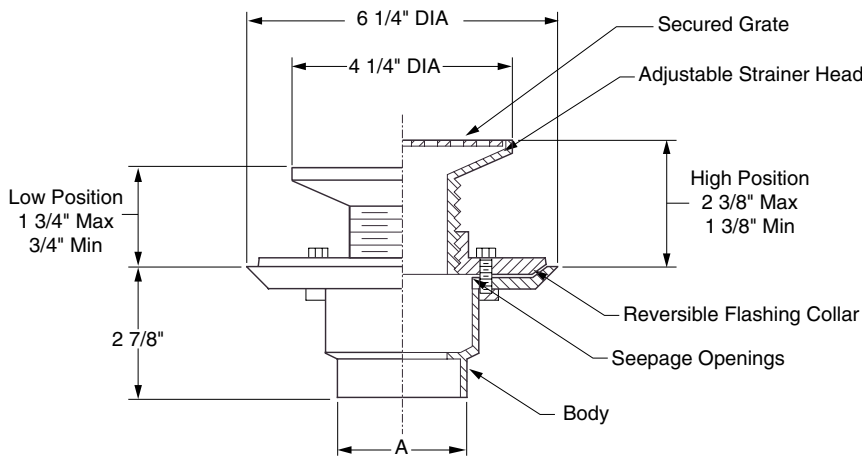
TAG _____

PVC and ABS Tiled Shower Drains, Series 215-216 _____

Product Description: PVC or ABS tiled adjustable shower drain with stainless steel grate.

Features and Benefits:

- Fits over 2" and inside 3" Sch 40 DWV pipe
- 4 1/4" round secured stainless steel grate with 2" threaded shank
- Adjustable strainer head to meet finish floor level
- Plastic rim allows easy grate replacement
- Clamp ring features keyhole slots for versatility and durability
- Threaded brass insert in body for clamping collar bolts
- Flashing collar with seepage openings
- Reversible flashing collar for high/low adjustment
- IAPMO listed



Series 215-216



Series 215

Series Number	Description	Outlet Size "A"	Outlet Type
215-H02X03	ABS Shower Drain Body and Stainless Grate	2"x3"	Hub x Slip
216-H02X03	PVC Shower Drain Body and Stainless Grate	2"x3"	Hub x Slip

Note: Dimensional data is subject to manufacturing tolerances and change without notice.



A Product of:
JAY R. SMITH MFG. CO.
 DIVISION OF SMITH INDUSTRIES, INC.



Series 215-216

SPM 1013

6/06