

FLOOR DRAINS AND ACCESSORIES

200 Series

TAG _____

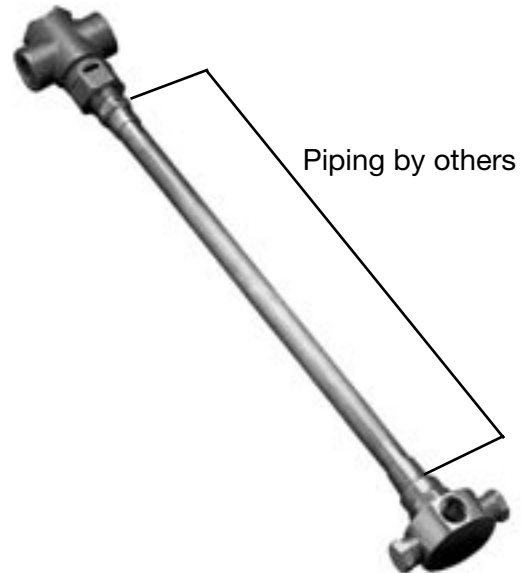
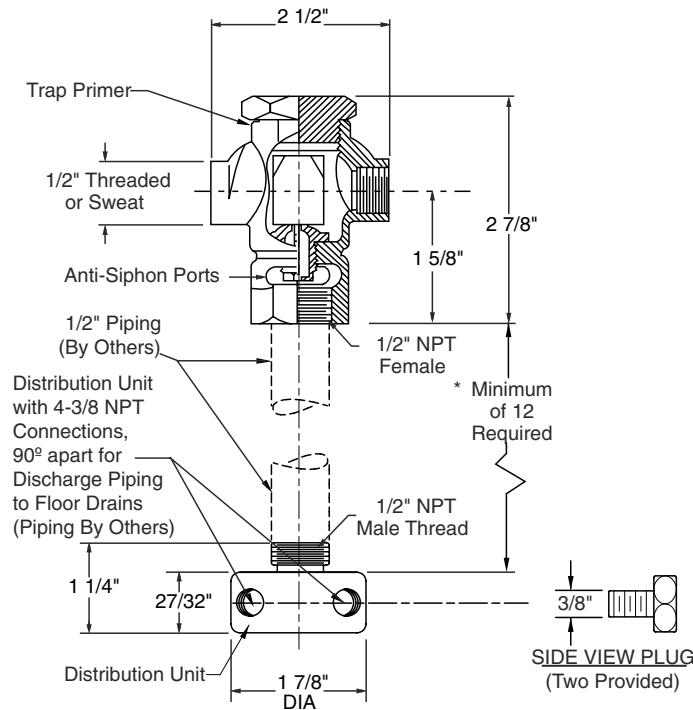
A Multi-Port Distribution Unit with an Automatic Trap Primer, Series 260

Product Description: The automatic trap primer and multi-port distribution unit are designed to provide the installer a positive method to simultaneously prime a maximum of four floor drain traps. The distribution unit consists of four connections and two plugs.

The trap primer with distribution unit is used where trapped floor drains installed in remote locations or installations subject to extenuating conditions may experience trap seal evaporation. The trap primer maintains the water seal in the trap preventing sewer gas and other objectionable and contaminated odors to escape through the drain(s).

Features and Benefits:

- Reduced material and installation cost—one trap primer distribution unit instead of four trap primers
- Replenishes evaporated water in the floor drain P-trap to prevent escape of sewer gases
- Anti-Siphon ports in the primer body prevent siphonage of trap water into the water supply line
- Activates with as little as 20 PSI
- Automatic release of water from the trap primer is factory set—no field adjustment necessary



Trap Primer with Distribution Unit
Series 260

FIG. NUMBER	PIPE SIZE	OUTLET
□ 260-T	1/2"	NPT female inlet and outlet connection
□ 260-SC	1/2"	Copper sweat connection

NOTE: Dimensional data is subject to manufacturing tolerances and change without notice.